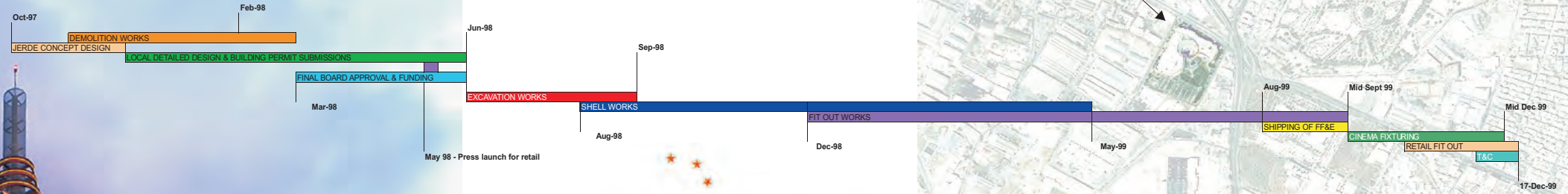
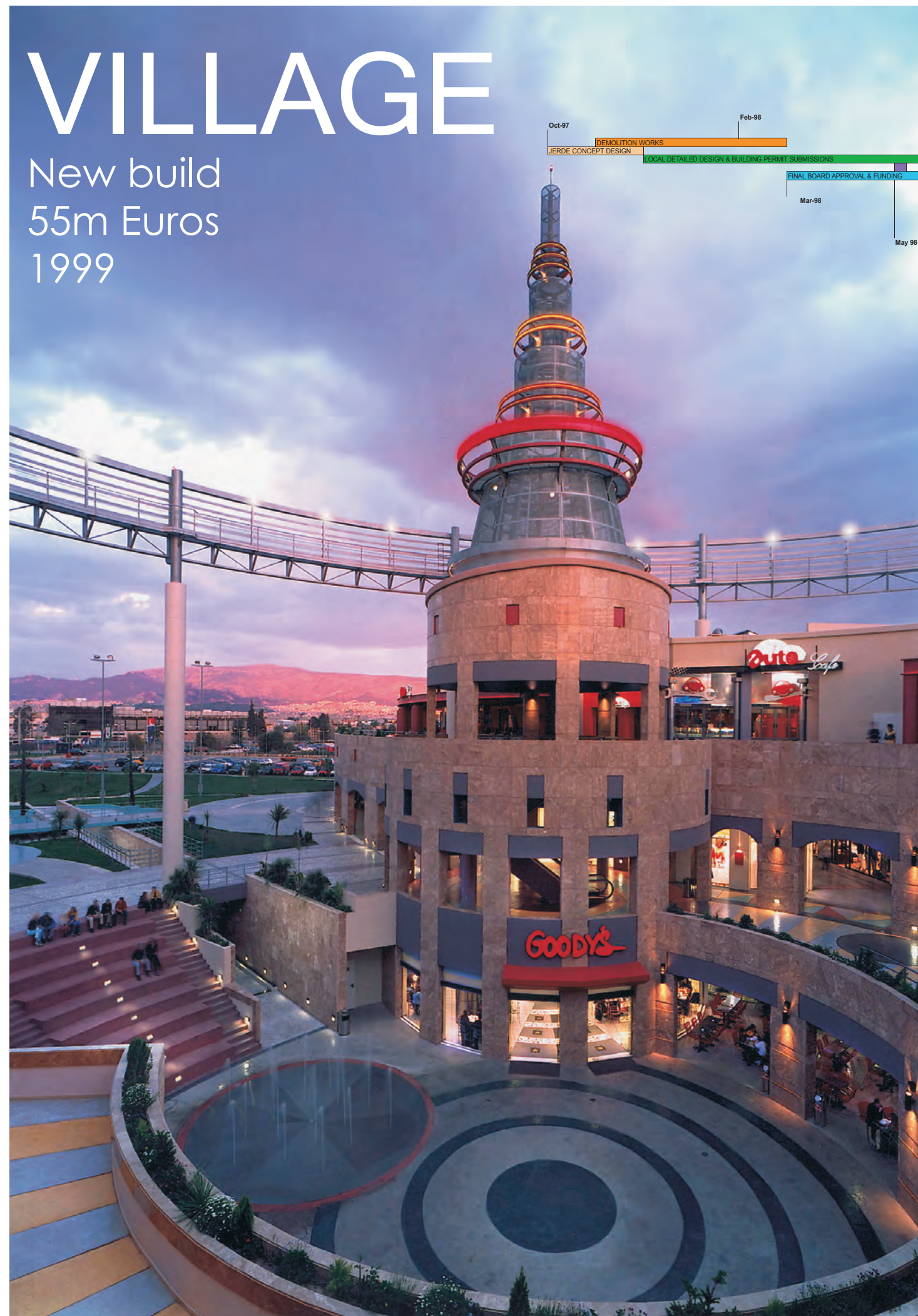
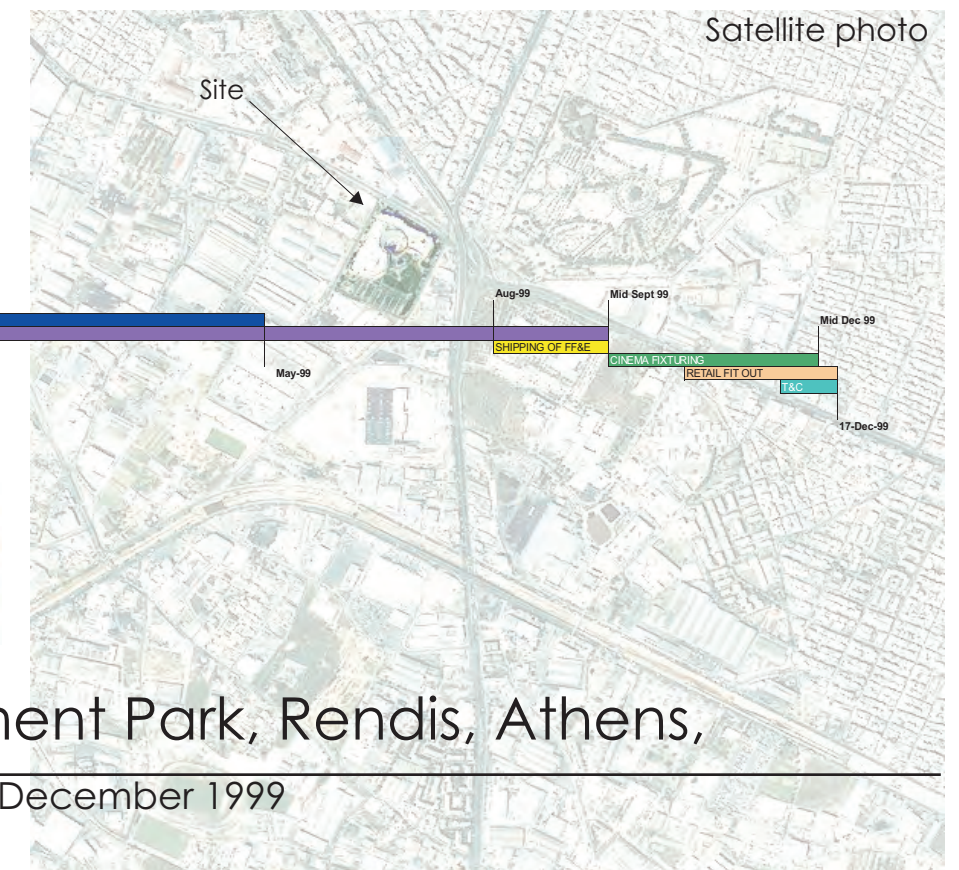


VILLAGE

New build
55m Euros
1999



ENTERTAINMENT PARK
VILLAGE



Village Entertainment Park, Rendis, Athens, Greece

Opened 17th December 1999

About the Development

Entertainment Park was an innovative and revolutionary concept for the Greek market, bringing to life a unique entertainment and shopping destination in a cinematically themed environment.

At the heart of the development are the Village 20 theatres with over 4,500 seats with 3 THX rated auditoriums. The cinemas were an undoubted success with little competition in the immediate catchment areas attracting over 2.1 million movie patrons during its first year

of trading alone.

The complex is housed on 36,000 sqm site surrounded by a 10,000 sqm park with 1,200 car parking spaces. It also has excellent road access by car and public transport from Athen's existing road network. The stores within the complex were designed to optimise the commercial use and a great deal of attention was paid to creating the correct tenant mix for the available 9,000 sqm of lettable retail space for fashion, lifestyle, games, restaurant and fast food which created the first true family shopping and entertainment destination in Greece.



Model

"Working from site acquisition through to operation Simon Jeffries was responsible for overall budget control of this 55 million Euro investment. This was an extremely challenging project built and co-ordinated with a small assembled team. Simom appointed both international and local consultant teams plus recommendation on design and build contracts for local appointed main contractor. Half way through the project Village sold half of the development to an international asset management company and Simon looked after all disclosures pertaining to project expenditure, reconciling both asset registers in both international and local books."



VILLAGE

NEW BUILD 17.6m Euros

1996

06-Oct-95

EXCAVATION WORKS

Apr-96

24/05/1996 building breaks ground

Sep-96

Dec-96

SHELL WORKS

FIT OUT WORKS

SHIPPING OF FF&E

CINEMA FIXTURING

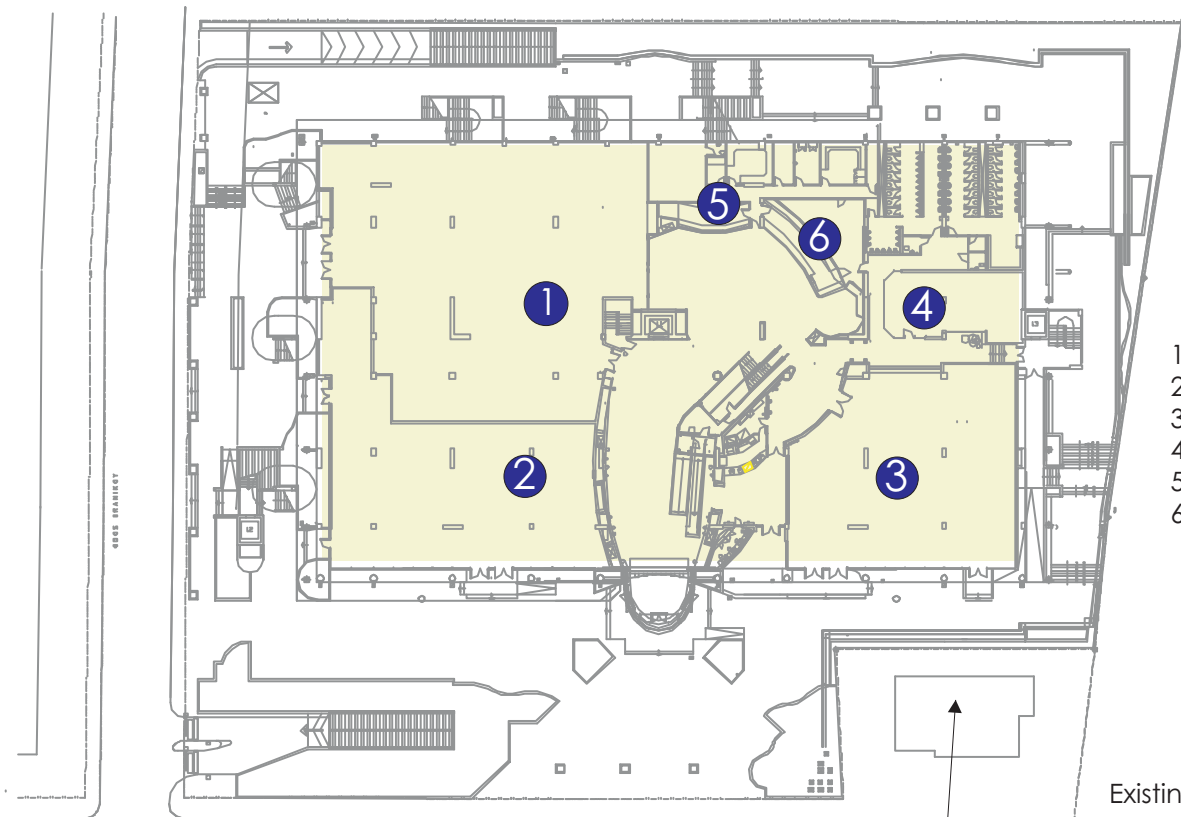
RETAIL FITOUT

T&C

07-Feb-97

16-Mar-96

Nov-96



- 1 Virtuality Café
- 2 Virgin mega store
- 3 Retail store
- 4 Village cinema store
- 5 Box office
- 6 Concessions stand

Existing apartment block

Village Centre, 10 cinemas, Maroussi, Athens, Greece

Opened 7th February 1996

The first multiplex in Greece, Village Centre was hailed for revolutionising the movie going habits of Athenians, achieving in excess of 1.5million admissions in its first year of trading.

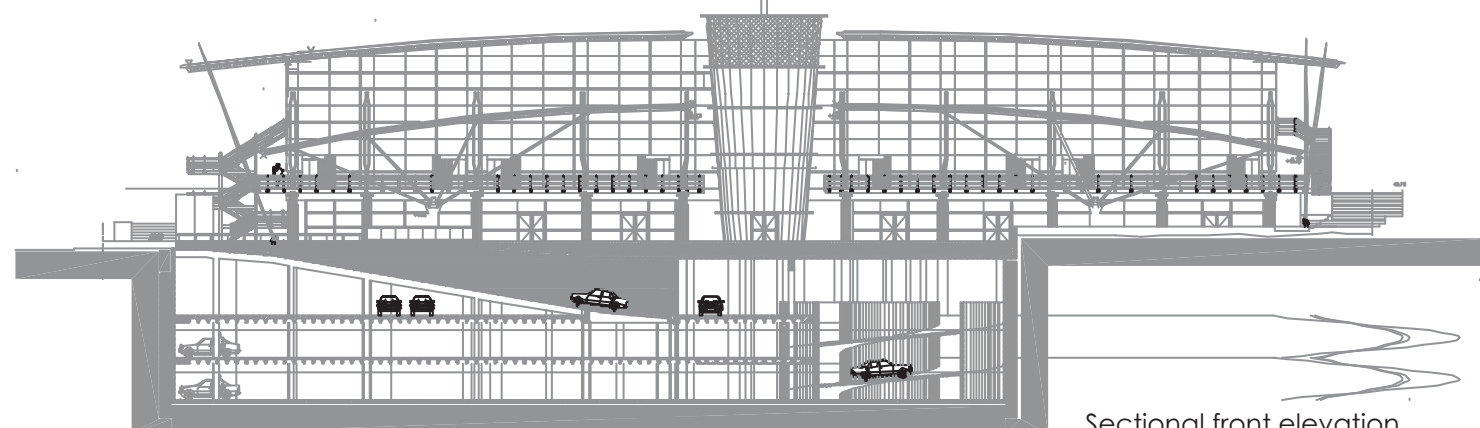
Located in the northern suburbs of Athens, the complex is sited within a mixed office and residential district.

Developed in conjunction with the Vardinoyannis group, a prominent Greek family, the land was provided by the local partner. The site was challenging since it was set back some 70m from Kifisias avenue, the main north / south highway, and at opening created havoc in traffic flows due to the city's poor road network.



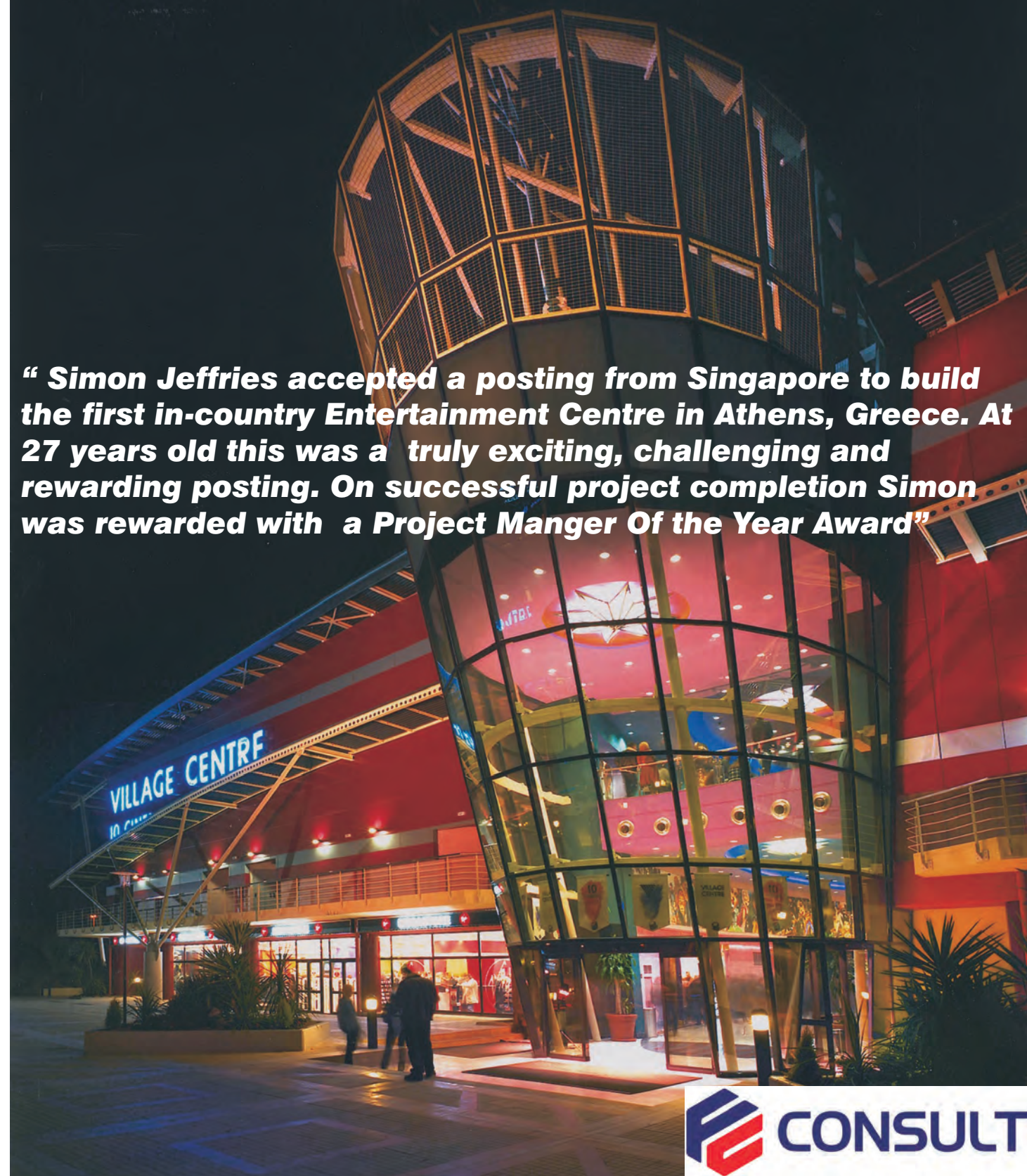
Shell works July '96

main entrance



Sectional front elevation

“ Simon Jeffries accepted a posting from Singapore to build the first in-country Entertainment Centre in Athens, Greece. At 27 years old this was a truly exciting, challenging and rewarding posting. On successful project completion Simon was rewarded with a Project Manger Of the Year Award”





Scope of Works:

Monitored monthly cost reporting

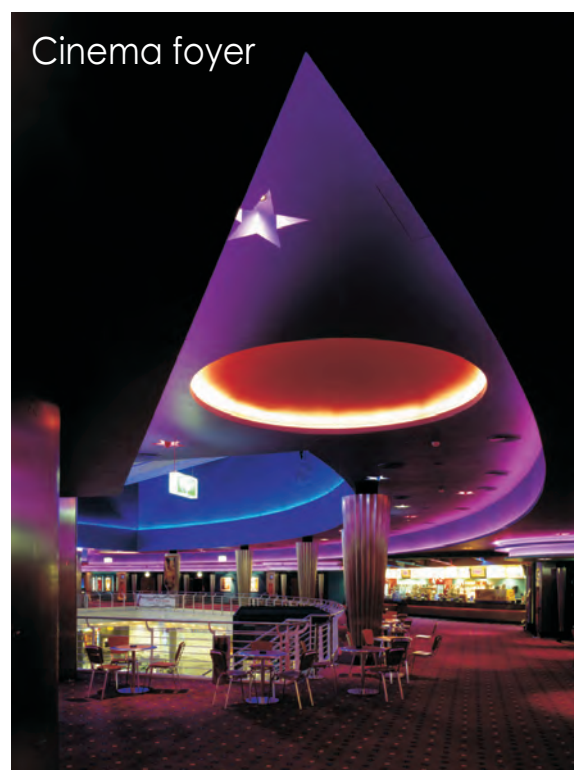
Provided assistance with FF&E vendor procedures

Reviewed and agreed with international operations scheme layouts

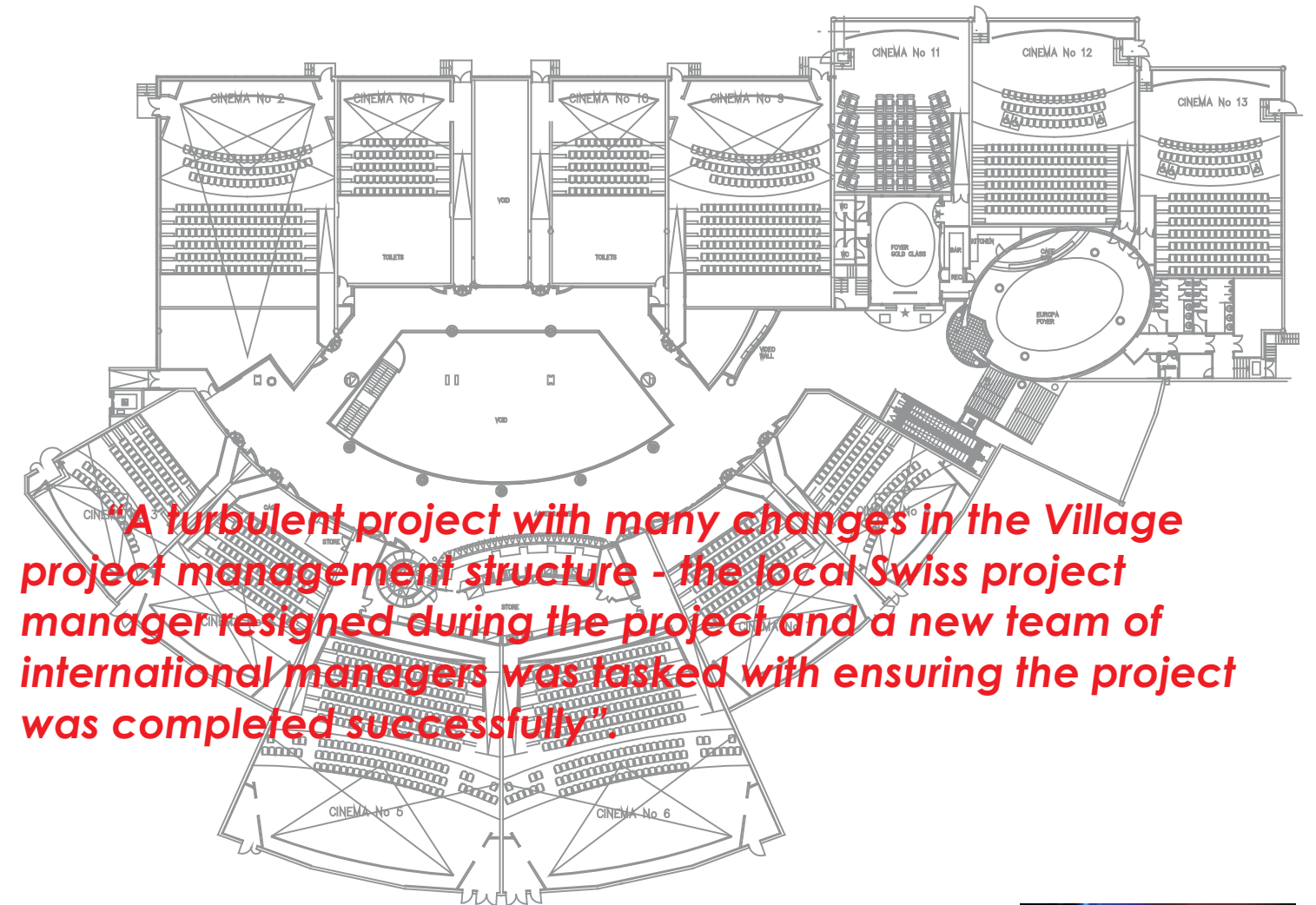
Monitored programme of works

Reported back to corporate head office monthly on project progress

Audited completion accounts from Credit Suisse leasing facility and reconciled to original budget



First Floor cinema level



Cine Village, Balexert, Geneva, Switzerland

Opened 17th November 1999



Situated on the outskirts of Geneva, Cine Village Balexert was the second multiplex in Switzerland, the first in the French speaking quarter. The site was developed as part of an existing extension to one of Switzerland's largest developers, the Migros Group, whom operate a substantial chain of supermarkets across the country.

Set over a footprint of 7,015 sqm on the first floor of a new purpose built leisure extension, the cinemas are centred around a galleried atrium with upper foyer and concessions bar that serve the 2,813 seater 13 screen complex. The hot shell fit-out works were documented by Tri-dimensions, a Geneva based architectural practice, from a concept by Village Roadshow's in-house design team. The hot shell contract was undertaken by a Belgium contractor, COSIMCO, who formed a local Swiss company to undertake the works.





Cold shell
1999
14.4m euros

Scope of Services:

Monitored monthly cost reporting

Provided assistance with FF&E vendor procedures

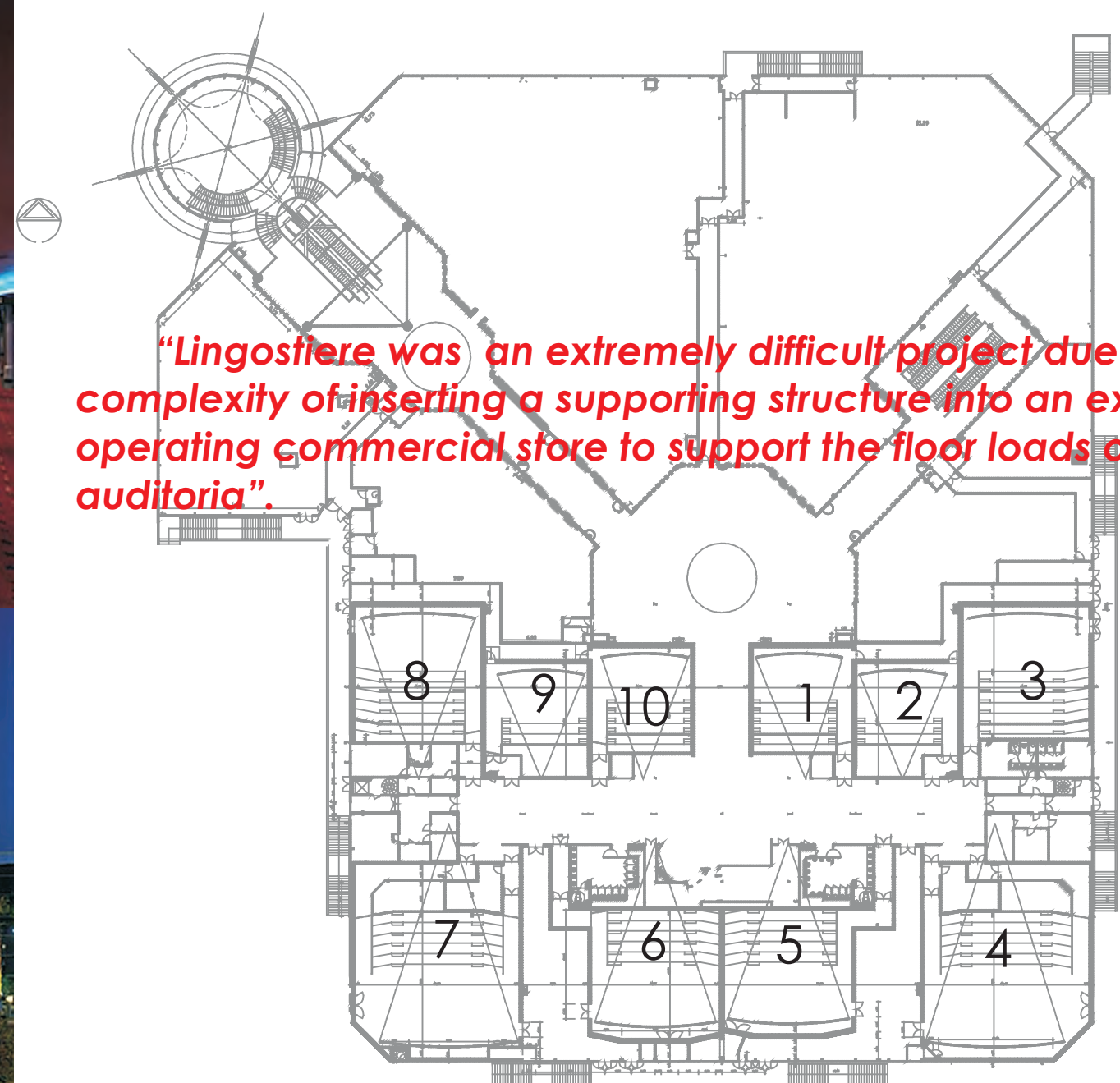
Reviewed and agreed with international operations scheme layouts

Monitored programme of works

Reported back to corporate head office monthly on project progress

Trained two French project managers during the project programme for the future build out programme

10 Screens
1,497 seats
11,775 sqm (inc. Booth + retail)



“Lingostiere was an extremely difficult project due to the complexity of inserting a supporting structure into an existing operating commercial store to support the floor loads of the auditoria”.

First Floor, Cinema & Retail level

Village Cinemas, Lingostiere, Nice, France Opened 4 Dec 99

Situated in the South of France, Lingostiere is located along the main highway from Nice. Developed as part of an upgraded retail mall, the multiplex is located above a large existing and operating Toys R Us.

To create a destination point Village formed a brand new entrance to the retail mall that incorporates stair and escalator access to the upper level. Village undertook the letting of the upper retail tenancies adjacent to the ticket box as part of the deal with the landlord to incorporate the multiplex.

